



Compuware  
Optimal Trace™  
Enterprise

## ***Requirements Definition & Management Best Practice***

Compuware Optimal Trace  
Best Practice Training



copyright © 2007 Strata Software Ltd. All rights reserved

0-1

## Training Objectives

- Optimal Trace functional overview
- Introduction to Structured Requirements and Lifecycle traceability
- Policy Guidance



copyright © 2007 Strata Software Ltd. All rights reserved

0-2

The primary objective of this training course is to provide best practice guidance for using Compuware Optimal Trace at an Enterprise level.

The emphasis is therefore on how best to **apply** the tool functionality, rather than on providing a tool function tutorial per se – much of this is covered by the Tool Help.

## Slide Classification



- Tool slides describe tool functionality
  - e.g. Creating custom properties
- Concept slides address process/method aspects
  - e.g. particular ways to classify requirements
- Practice slides show how to apply tool functionality to align a process or concept
  - e.g. use custom properties to classify requirements



copyright © 2007 Strata Software Ltd. All rights reserved

0-3

## *Training Modules*

1. Requirements Definition
2. Requirements Publication and Harvesting
3. Team Working
4. Requirements Management and Traceability

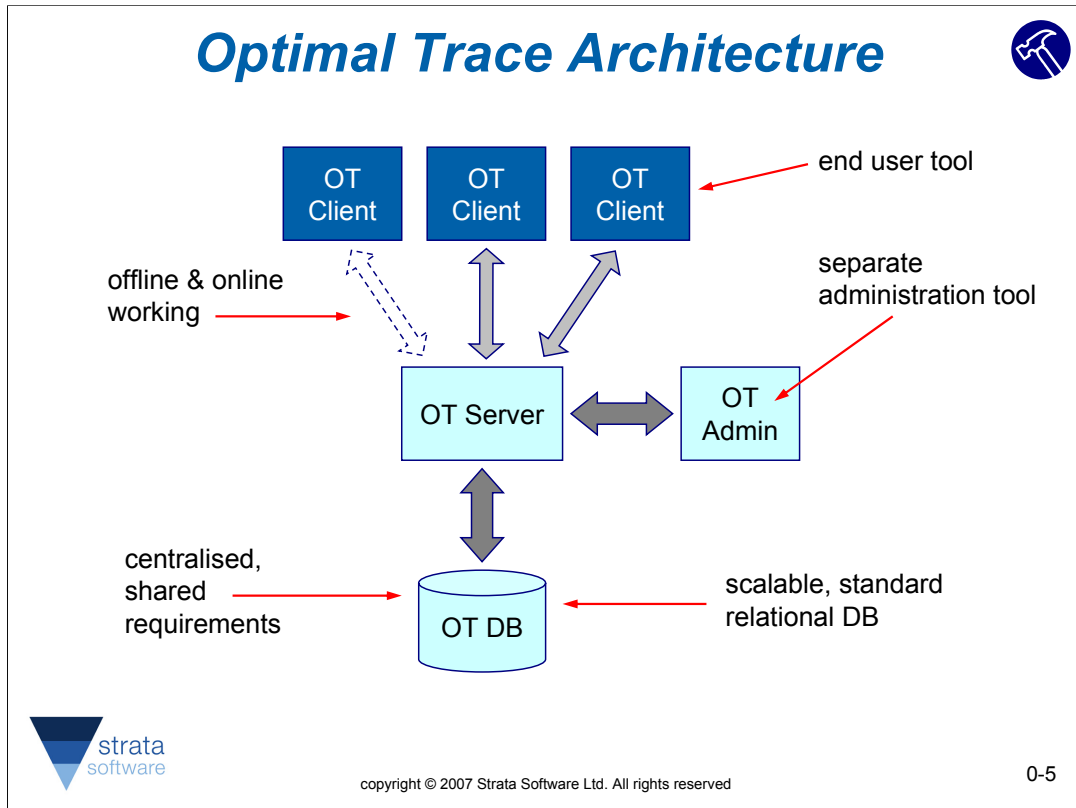


copyright © 2007 Strata Software Ltd. All rights reserved

0-4

The training material is organised into 4 separate modules:

1. Requirements Definition is the most process-oriented module. It focuses on the fundamental question of how to define requirements with Optimal Trace, and how to organise and structure things. This module necessarily covers a fair amount of conceptual ground and lays the foundation for all the other modules.
2. Publication and Harvesting is a more mechanistic module. It looks at how to use various tool functionality to publish or export information, and how to import or harvest requirements from existing sources.
3. Team working addresses collaboration support enabling multiple users to work together on a project in a safe and consistent manner. Whereas the other modules focus on the Optimal Trace client, this module also looks at the server and the use of the administration tool.
4. Requirements Management and Traceability explores topics such as change management, traceability and impact analysis and broadens the scope to cover project lifecycle topics.



Optimal Trace Enterprise consists of Clients, a Server and an Administration tool. Optimal Trace Server uses standard relational DB technology to persist project information.

# Optimal Trace Client Orientation



## Tree View

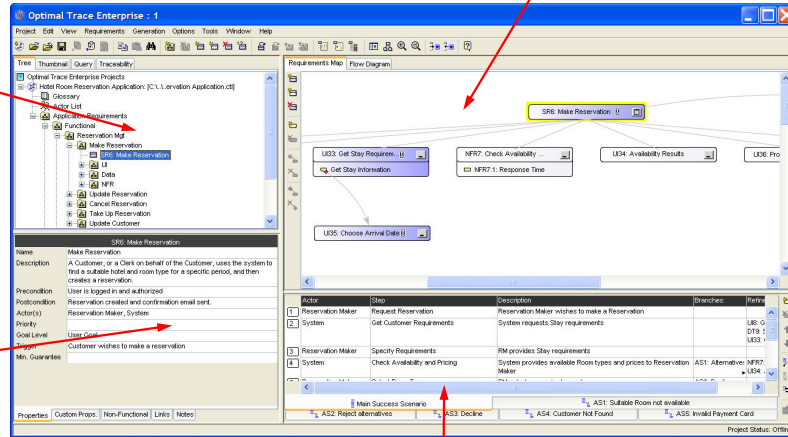
Contains the list of currently opened projects and their contents

## Detail View

Contains detail associated with the specific node selected in the Tree View

## Right Pane View

Graphical notation relevant to the Node selected in the Tree View



## Scenario/Item View

Structured textual detail relevant to a selected scenario (if any)



copyright © 2007 Strata Software Ltd. All rights reserved

0-6

One of the strengths of Optimal Trace is the relative simplicity of the user interface, making it appropriate for both business and technical users.



Compuware  
Optimal Trace™  
Enterprise

## ***Requirements Definition & Management Best Practice***

Compuware Optimal Trace  
Best Practice Training



copyright © 2007 Strata Software Ltd. All rights reserved

0-7